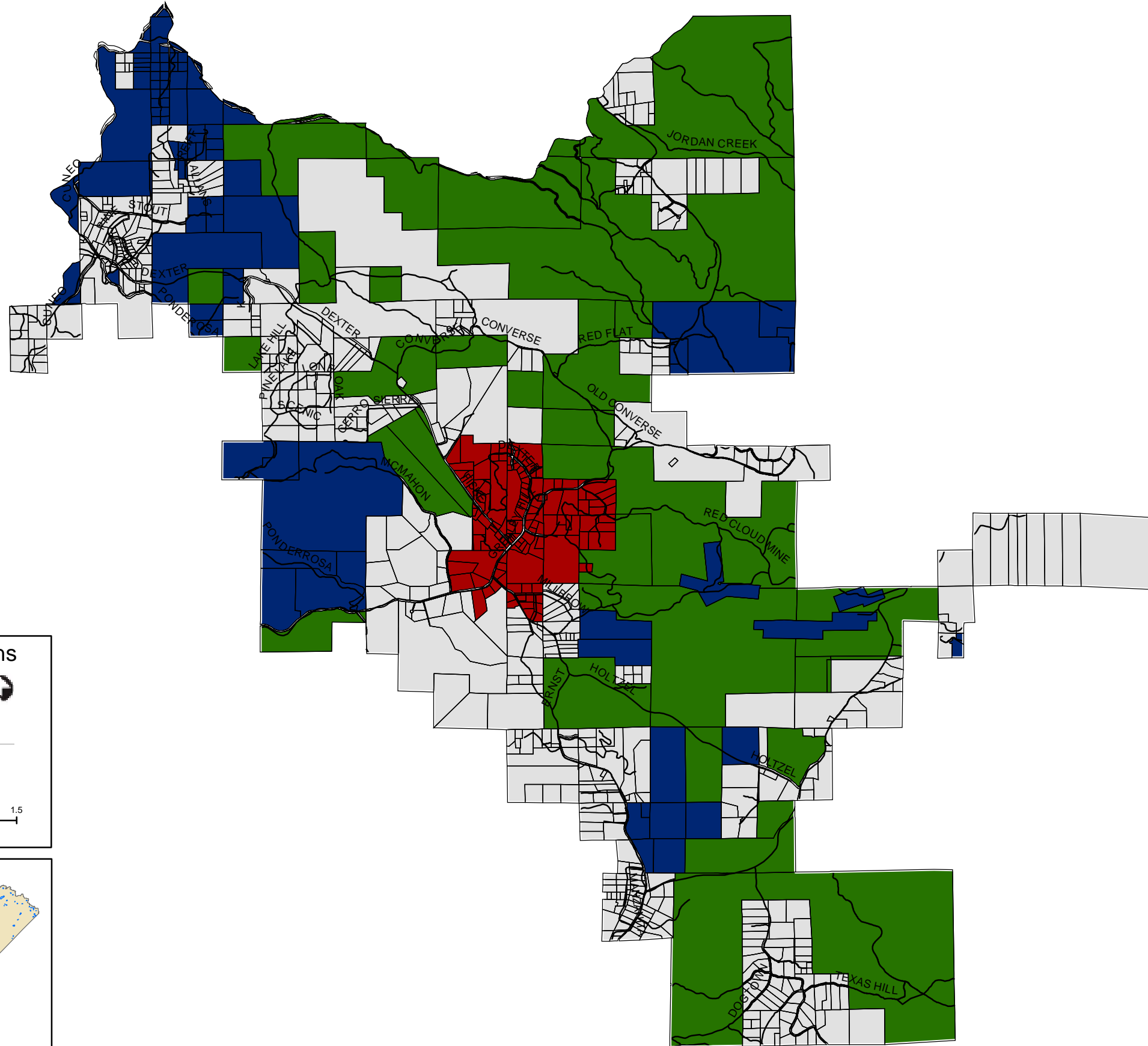


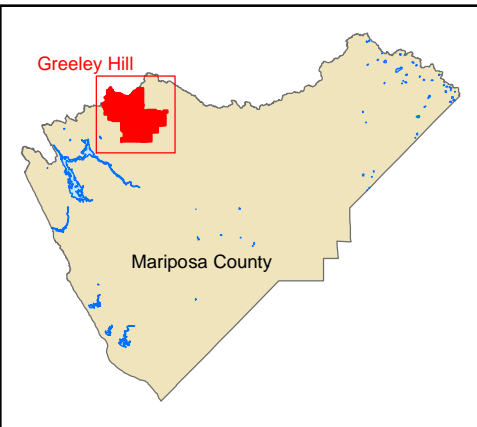
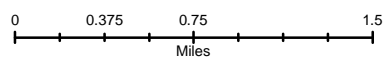

PROPOSED GREELEY HILL COMMUNITY  
PLANNING STUDY AREA LAND USE DIAGRAM

**MARIPOSA PLANNING**  
POST OFFICE BOX 2039 • 5100 BULLION STREET  
MARIPOSA, CALIFORNIA 95338-2039  
209 . 966 . 5151 • FAX 209 . 742 . 5024  
E-MAIL: MariposaPlanning@MariposaCounty.org  
www.MariposaCounty.org/Planning



**Land Use Designations**

- Ag/Working Landscape
- Natural Resources
- Residential
- Interim Community Center
- Roads



Map Date: June 15, 2005