

MARIPOSA COUNTY RESOLUTION NO. 89-404

A RESOLUTION DENYING GENERAL PLAN AMENDMENT NO. 89-15

A MAP AMENDMENT TO THE MARIPOSA GENERAL PLAN

MARION UGLOW, APPLICANT

WHEREAS, an application for a General Plan Amendment to modify the land use classification of a 100 acre parcel from Agricultural Exclusive to Mountain Transition has been submitted to Mariposa County; and

WHEREAS, the Board of Supervisors has reviewed the request with regard to the policies of the General Plan and State law; and

WHEREAS, the Board of Supervisors considered the recommendations and concerns of the Agricultural Review Committee, Planning Commission and other local agencies; and

WHEREAS, the Planning Commission and Board of Supervisors have held public hearings on the General Plan Amendment in accordance with County Code and State Law.

NOW, THEREFORE, BE IT RESOLVED that General Plan Amendment No. 89-15 as indicated on attached Exhibit A is hereby denied by the Mariposa County Board of Supervisors.

BE IT FURTHER RESOLVED that this action of the Board is based upon the following findings:

- 1.) This application demonstrated no showing of need for the conversion of viable agricultural land to residential purposes.
- 2.) The approval of this application could result in long term impacts to existing agricultural uses in the area.

1
2
3
4
5
6
7
8
9
10
11
12
13
14
15
16
17
18
19
20
21
22
23
24
25
26
27
28

BE IT FURTHER RESOLVED that based upon these findings the Board has determined that the amendment will not be in the public interest and will not not be desirable for the purpose of improving the Mariposa County General Plan.

PASSED AND ADOPTED by the Mariposa County Board of Supervisors on the 25th day of July, 1989 by the following vote:

AYES: TABER, PUNTE, RADANOVICH, ERICKSON, BAGGETT


NOES: None

ABSENT: None


ABSTAINED: None



GERTRUDE TABER, CHAIRMAN
Mariposa County Board of Supervisors

ATTEST:


MARGIE WILLIAMS, Clerk of the Board

APPROVED AS TO FORM AND LEGAL SUFFICIENCY:


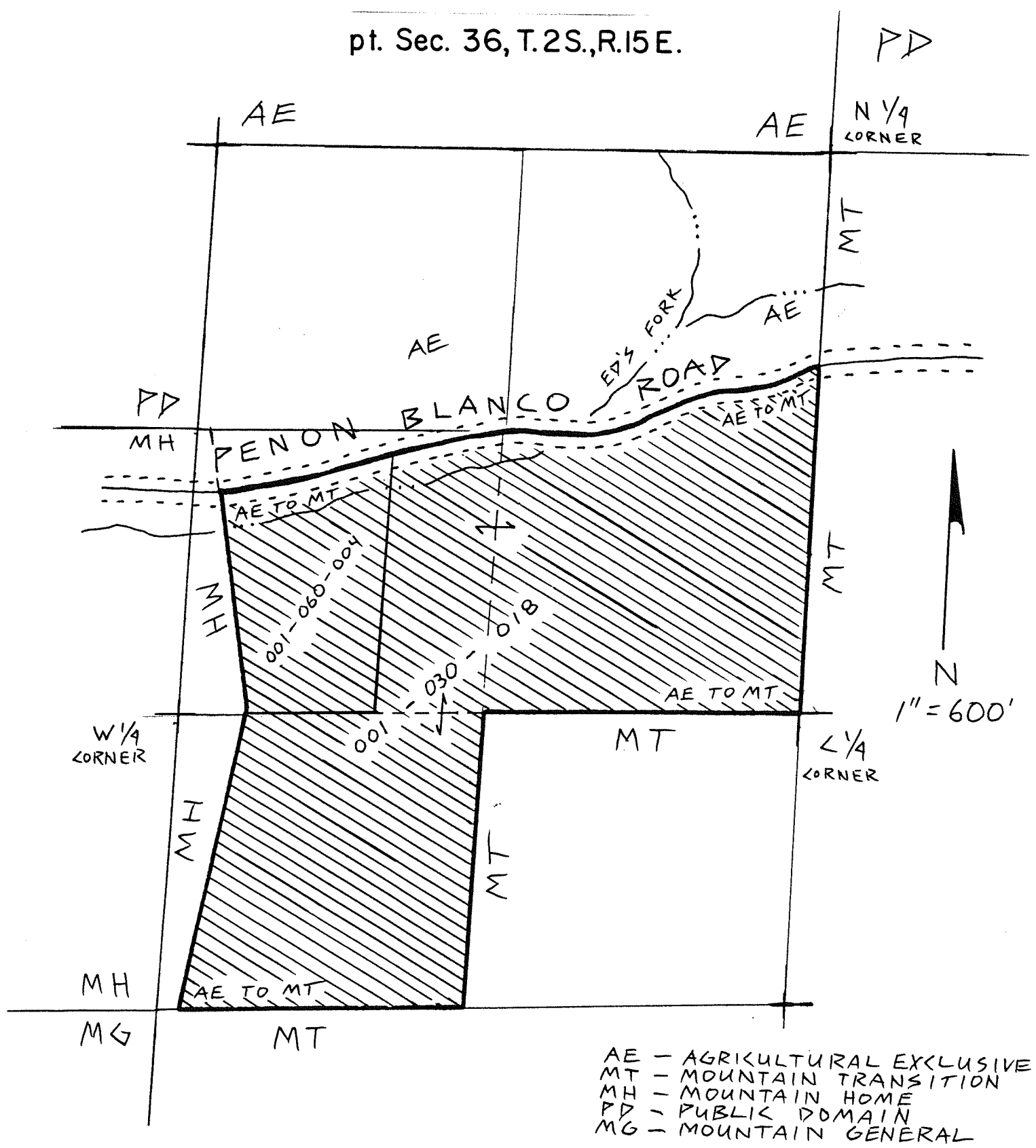
JEFFERY C. GREEN, County Counsel

MARIPOSA COUNTY GENERAL PLAN AMENDMENT 89-15

AGRICULTURAL EXCLUSIVE TO MOUNTAIN TRANSITION

MARION and NONA UGLOW

pt. Sec. 36, T.2S.,R.15E.



- AE - AGRICULTURAL EXCLUSIVE
- MT - MOUNTAIN TRANSITION
- MH - MOUNTAIN HOME
- PD - PUBLIC DOMAIN
- MG - MOUNTAIN GENERAL