

A RESOLUTION APPROVING PARCEL MAP FOR LDA 1248

FOR DAVID L. & MARY LOU MENDENHALL

WHEREAS, Mariposa County Code Section 16.12.315 requires approval of the Board of Supervisors of all land division parcel maps;

NOW, THEREFORE, BE IT RESOLVED by the Mariposa County Board of Supervisors, a political subdivision of the State of California, that the Board:

1. Approve the Parcel Map for LDA 1248 for David L. & Mary Lou Mendenhall;
2. Accept, on behalf of the public, the dedications of public utility easements, as shown on said map;
3. Accept, on behalf of the public, for public use but not for maintenance, the offers of dedication along Wildcat Road, as shown on said map;
4. Reject, without prejudice, the other offers of dedication of roads within the subdivision; and
5. Authorize the Clerk of the Board of Supervisors to sign said map.

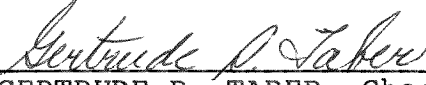
PASSED AND ADOPTED by the Mariposa County Board of Supervisors this 17th day of January, 1989, by the following vote:

AYES: BAGGETT, PUNTE, ERICKSON, RADANOVICH, TABER

NOES: NONE

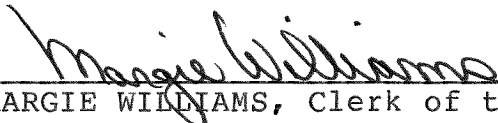
ABSENT: NONE

ABSTAINED: NONE



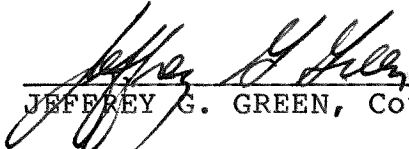
GERTRUDE R. TABER, Chairman
Mariposa County Board of Supervisors

ATTEST:

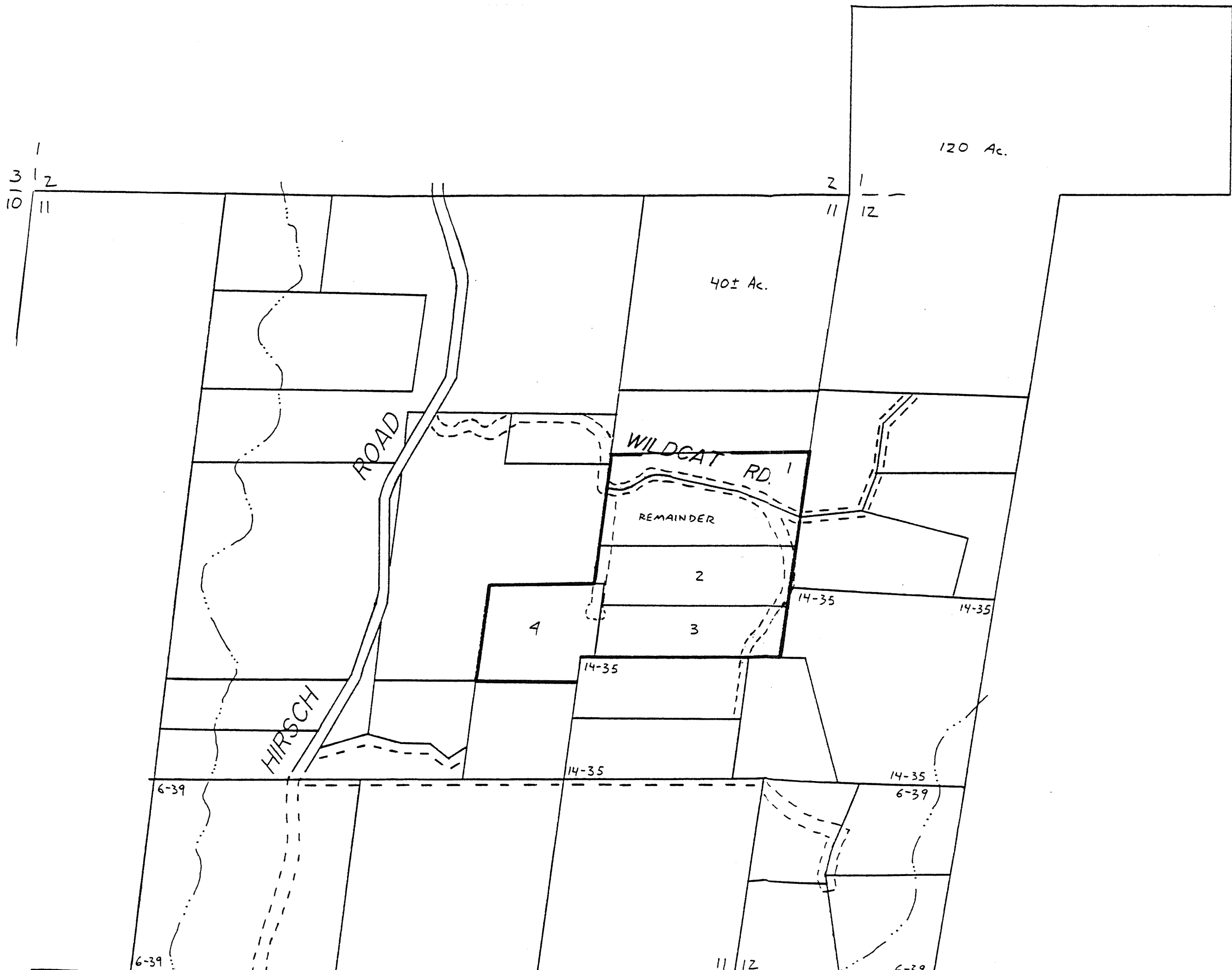


MARGIE WILLIAMS, Clerk of the Board

APPROVED AS TO FORM AND
LEGAL SUFFICIENCY:



JEFFREY G. GREEN, County Counsel



PT. SEC. 1, 11, 12,
 T. 6 S., R. 19 E.,
 OFFER OF
 DEDICATION
 LDA 1248
 DAVID MENDENHALL