

*When Read and Returned to
Clerk of the Board*

MARIPOSA COUNTY RESOLUTION NO. 89-9

A RESOLUTION ACCEPTING OFFERS OF DEDICATION FOR PUBLIC ACCESS
AND UTILITY PURPOSES ALONG OWL CREEK ROAD

WHEREAS, the County has received a request from a developer to accept offers of dedication along Owl Creek Road in order to authorize the access to portions of the Quail Ridge Estates Major Subdivision, and

WHEREAS, acceptance of dedications for utility and public access but not for maintenance is authorized by the Mariposa County Road Improvement and Circulation Policies when requested by a developer.

NOW,, THEREFORE, BE IT RESOLVED by the Mariposa County Board of Supervisors, a political subdivision of the State of California, that the Board:

1. Accept, on behalf of the public, the dedication of a non-exclusive easement for access and public utilities only and not for maintenance, as shown on the Parcel Map for Cecil Harris recorded in Book 14 of parcel maps at Page 11, Mariposa County records.

2. Accept, on behalf of the public, the dedication of non-exclusive easement along Owl Creek Road for access and public utilities only and not for maintenance, as shown on the map of Quail Ridge Estates recorded as Record of Survey No. 2214, Mariposa County Records.

3. Accept, on behalf of the public, the dedication of non-exclusive easement along the northerly boundaries of parcels A and B for access and public utilities only and not for maintenance, as shown on the Parcel Map for Michael L. Higgins recorded in Book 21 of Parcel Maps at page 23, Mariposa County Records.

PASSED AND ADOPTED by the Mariposa County Board of Supervisors this 10th day of January , 1989 by the following vote:

AYES: BAGGETT, PUNTE, RADANOVICH, TABER
NOES: NONE
ABSENT: NONE
ABSTAINED: ERICKSON

Gertrude R. Taber

GERTRUDE R. TABER, Chairman
Mariposa County Board of Supervisors

Doc. # 890183

RECORDED AT THE REQUEST OF *Board of Supervisors*
Jan. 17, 1989 AT *5* MIN. PAST *11* O'CLOCK *P.* M. IN

OFFICIAL RECORDS.

MARIPOSA COUNTY RECORDS.

Evelyn D. Bullard RECORDER

FEE \$ *n/c*

By Name, Amount.

ATTEST:

Margie Williams
MARGIE WILLIAMS, Clerk of the Board

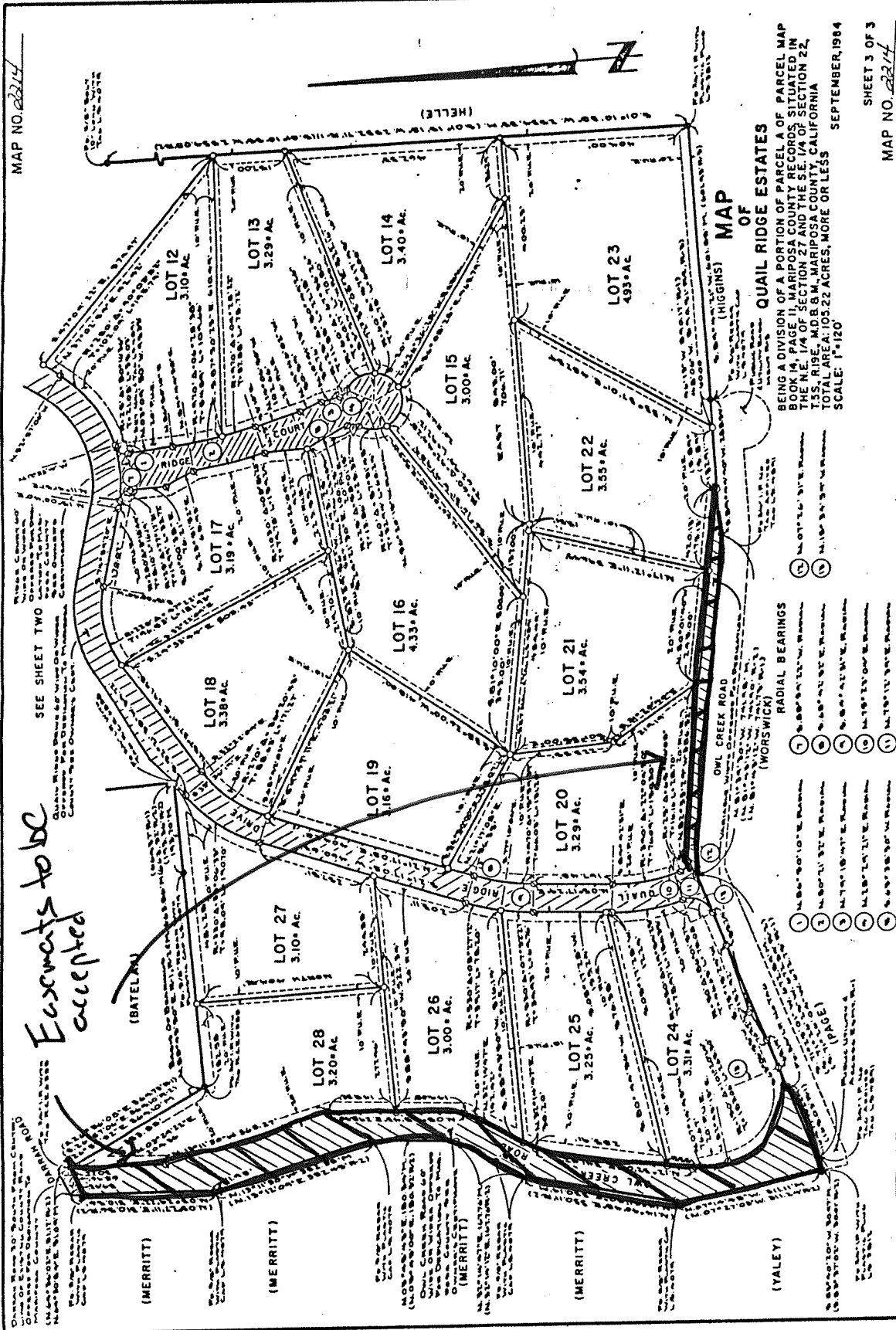
APPROVED AS TO FORM AND
LEGAL SUFFICIENCY:

Jeffrey G. Green
JEFFREY G. GREEN, COUNTY COUNSEL

MAP NO. 2214

SEE SHEET TWO

Excavations to be accepted



SHEET 3 OF 3
MAP NO. 2214

Book 21 Page 23

PARCEL MAP
FOR MICHAEL L. HIGGINS
 BEING A DIVISION OF PARCEL A OF PARCEL MAP BOOK 16,
 PAGE 41, MARIPOSA COUNTY RECORDS, SITUATED IN PORTIONS
 OF THE NE 1/4 OF THE SE 1/4 AND THE SE 1/4 OF THE NE 1/4
 OF SECTION 27, T. 5 S., R. 18 E., M.D.B.S.M.
 MARIPOSA COUNTY, CALIFORNIA
 TOTAL SUBDIVIDED AREA 10.31 ACRES
 JULY, 1984
 SURVEYOR

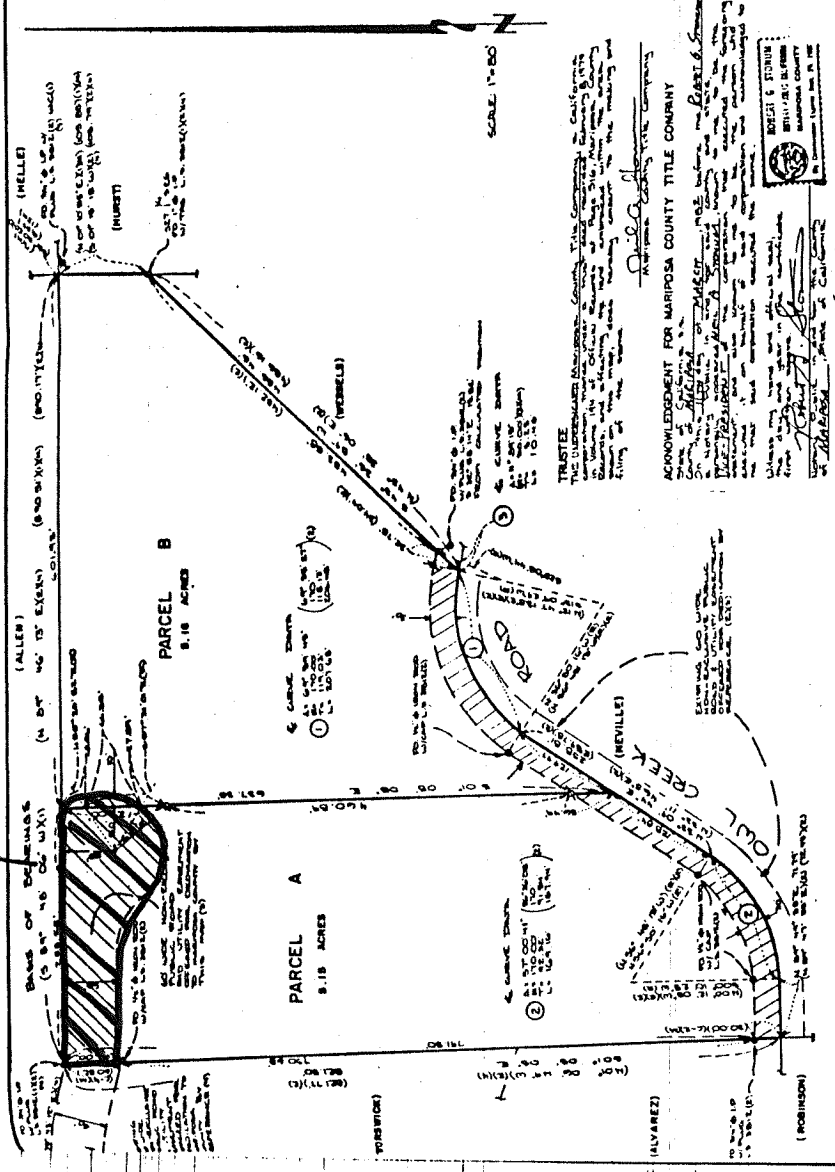
SCALE: 1" = 80'
 L.D.A. NO. 0097



COUNTY SURVEYOR
 COUNTY RECORDER
 BASIS OF BEARINGS
 REFERENCES
 LEGEND
 OWNER

ACKNOWLEDGEMENT
 I, Michael L. Higgins, County Surveyor, do hereby certify that the above described parcel map was prepared by me or under my direct supervision and that I am a duly licensed and qualified professional surveyor in the State of California.

Easement to be accepted



Book 21 Page 23